

ARM TYPE BLOOD PRESSURE MONITOR

MODEL NO: HKD-02



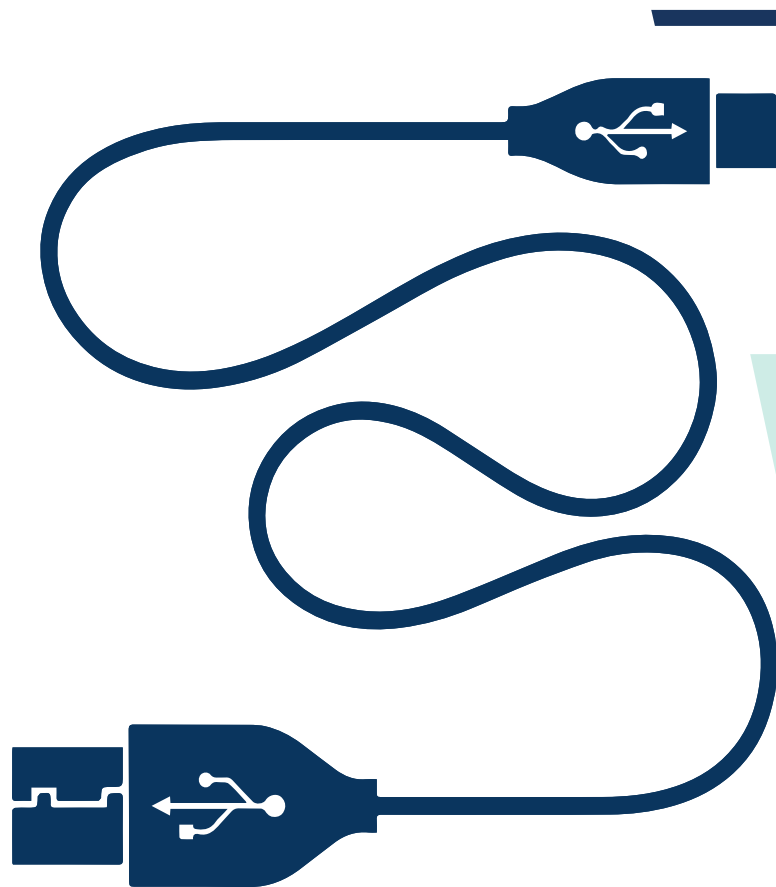
nimo[®]

NIMO® Automatic Arm Blood Pressure Monitor measures the oscillation or vibration of the blood pressure in the arm on the vessel wall. It provides a very fast and reliable measurement of heart rate along with systolic and diastolic blood pressure with the oscillometric method, and its accuracy has been clinically proven.

Nimo® Automatic Arm Blood Pressure Monitor, which is easy to use and provides reliable blood pressure measurement results, is designed to be user-friendly.

Thanks to HKD-02 Automatic Sphygmomanometer Get Accurate Measurements of Blood Pressure

- Arrhythmia control
- Automatic cuff control
- Cuff design compatible with Standard, obese and pregnant individuals
- Dual-user measurement log
- 2x120 pcs memory
- Easy to read with super large LCD display
- One-click measurement
- Auto shut off
- External power adapter support
- Calculate the average of the last 3 measurements
- Indicator Low battery

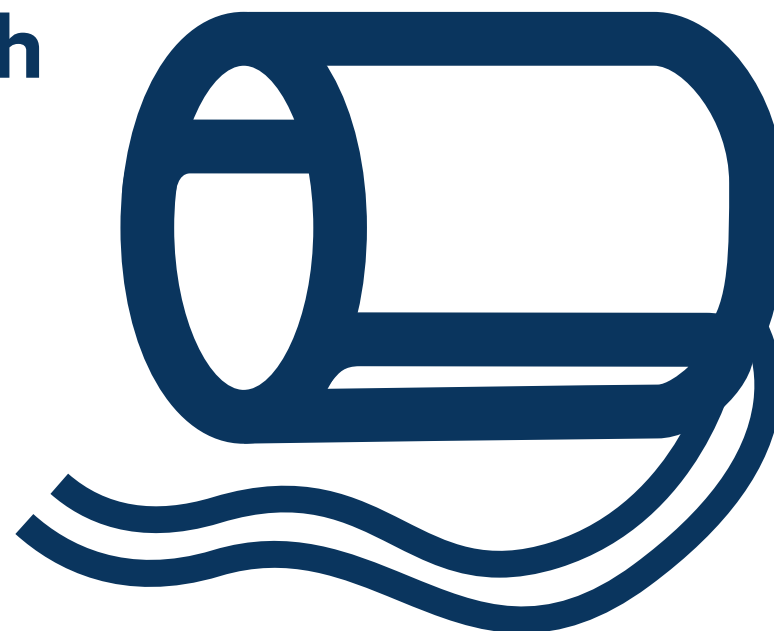


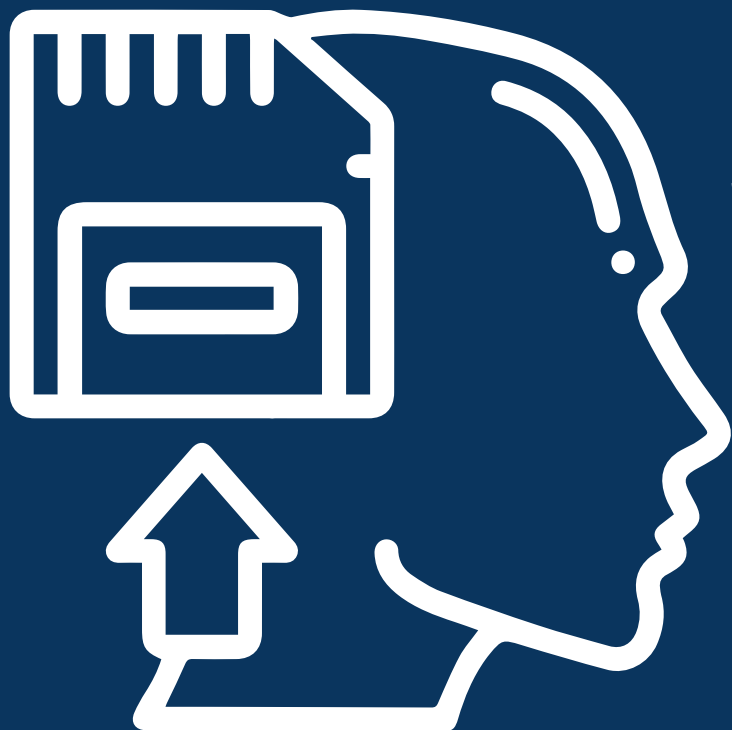
Ability to work with micro USB cable charger

NIMO® Arm Type Blood Pressure Monitor provides you convenience, thanks to its use with both battery and micro USB cable charger. With a single micro USB cable charger, you can both charge your phone and use your blood pressure monitor.

Cuff is compatible with every adult individual

This multifunctional special cuff, which appeals to every adult individual regardless of weight difference, provides you with ease of use.





High capacity of memory

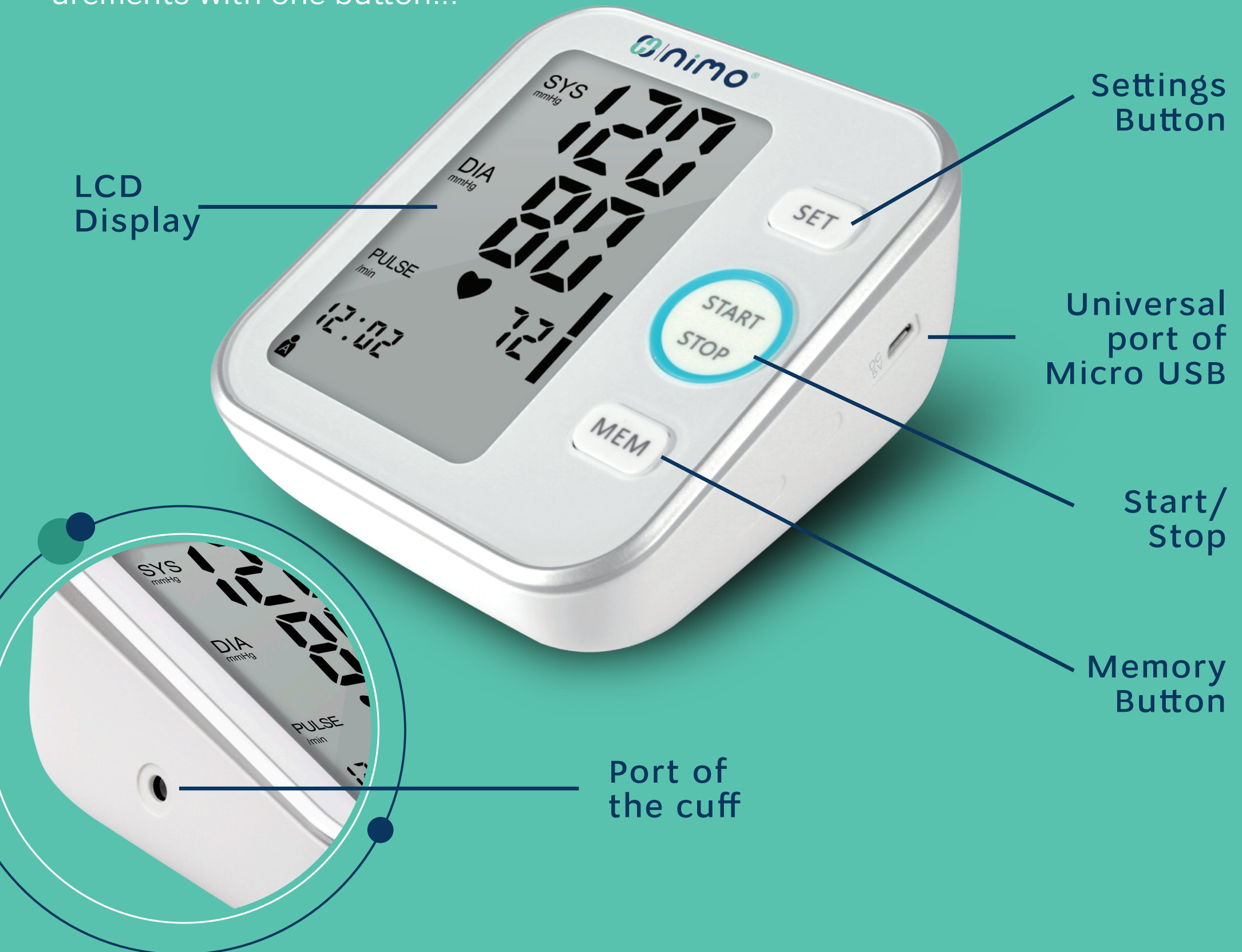
Measurements taken from users are recorded in two different sections as users A and B. Nimo® Arm Type Blood Pressure Monitor can securely store the last 120 records of both users and also view the average of our last 3 metrics.

Your heart rhythms are now under your control

During an arrhythmia, your heart may beat too fast (tachycardia), too slow (bradycardia), or irregularly. Take control of your heartbeats. Your health is substantial to us.



Nimo[®] Arm Type Blood Pressure Monitor has been designed with your comfort keeping in mind with its special cuff, large LCD screen, memory that can calculate the measurement average, and the ability to work with an adapter. Accurate measurements with one button...



TECHNICAL SPECIFICATIONS

| | |
|---------------------------------|--|
| Product Type | Upper arm type |
| Measurement Range | DIA: 40-130 mmHg SYS: 60-230 mmHg Pulse: 40-199 atim/dk |
| Accuracy | Blood pressure : ± 3 mmHg Pulse: $\pm 5\%$ of the reading |
| Memory | 2*120 groups memory (Double users) |
| Average Function | Last 3 groups average measuring value |
| Material | ABS+LCD Display |
| Cuff Circumference | 22-40 cm |
| Power Supply | Internal-DC 6V (4*AAA) / External-DC 5V 1A |
| Operating Conditions | Temperature: 5°C ~ 40°C Humidity : 15% to 93% RH. Pressure altitude: 70 ~ 106 kPa |
| Storage And Shipping Conditions | Temperature: -25°C ~ 70°C Humidity : $\leq 93\%$ RH. Pressure altitude: 70 ~ 106 kPa |



Box Content of Nimo[®] Arm Type Blood Pressure Monitor

1 Piece HKD-02
Blood Pressure
Monitor

1 Piece
Cuff

User Manual
and Warranty
Card

4 Piece
AAA Battery



Home Health Care Device



Household Self-test Tool



All the best
FOR YOUR HEALTH!